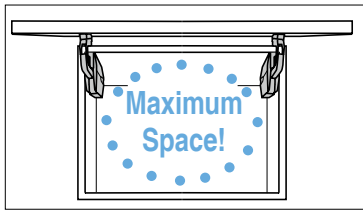


LIFT-ASSIST STAY GS-EZS-ELAN®



- Lift-assist
 - Free stop
 - Soft-close
- Passed 30,000 open/close private cycle test



Slim design maximises space inside of the cabinet.

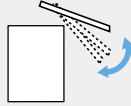
[3 Functions in 1 Stay]

● Lift-assist

Door can be opened with a slight force.



Fig. 1

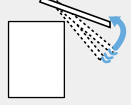


● Free stop

Door can be stopped in any position in the range of about 30° to 70°.



Fig. 2

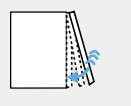


● Soft-close

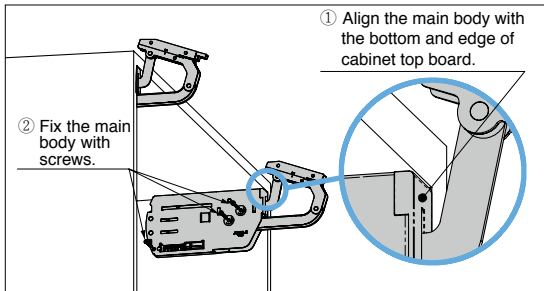
Door closes slowly in the range of about 0° to 20° even if you release your hands from the door.



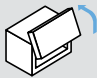
Fig. 3



[Easy Installation] Fig.4



Installation position is determined simply by pressing the main body against the bottom surface of top board and aligning the surface indicated by ① with cabinet edge.

Opening Direction	Description	Door Width	Door Height	Door Weight:※
 Up & Over	Lift-assist Free stop Soft-close	Max. 1200	500~750	5~12.5 kg

※Door weight includes handle.

- Patented Lapcon mechanism controls door opening and closing softly and smoothly.
 - Door can be opened with a slight force (see Fig. 1).
 - Door can be stopped in any position in the range of about 30° to 70° (see Fig.2).
 - Door closes slowly in the range of about 0° to 20° (see Fig.3).
- Installed on the bottom of cabinet top board for maximum space inside the cabinet.
- No hinges and connecting bar required for installation.
- Installation position of the main body is determined simply by aligning to the bottom surface of top board and cabinet edge (see Fig.4).
- Mounting plate can be quickly attached to the main body (see Fig.5).
- Torque adjustment according to the door weight is unnecessary.

[Specifications]

- Operating temperature: 0°C~40°C

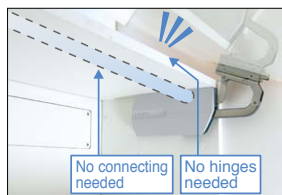
[Remarks]

- Be sure to read the "Cautions"
- Used in pairs.
- Never push down the arm of single stay before installation.
- Do not open the door further in fully opened position.
- Do not roughly open and close the door.

[Parts Included]

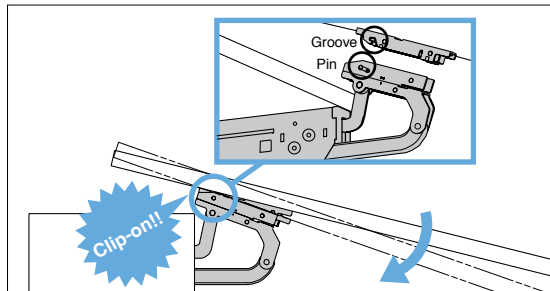
- Mounting plate
- Countersunk head tapping screw 3.5× 38 (for main body)
- Binding head tapping screw 3.5× 15 (for mounting plate)

Video Link

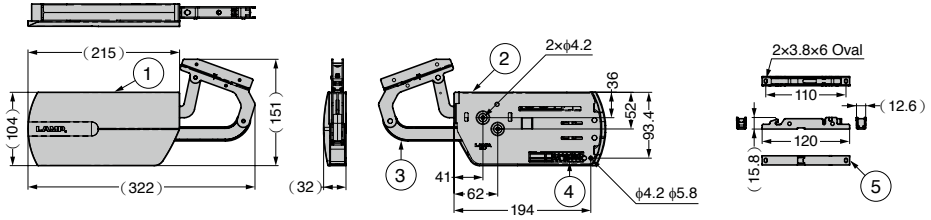


No need to install connecting bar and hinge separately, maximising space inside of the cabinet.

[Quick Door Installation] Fig.5

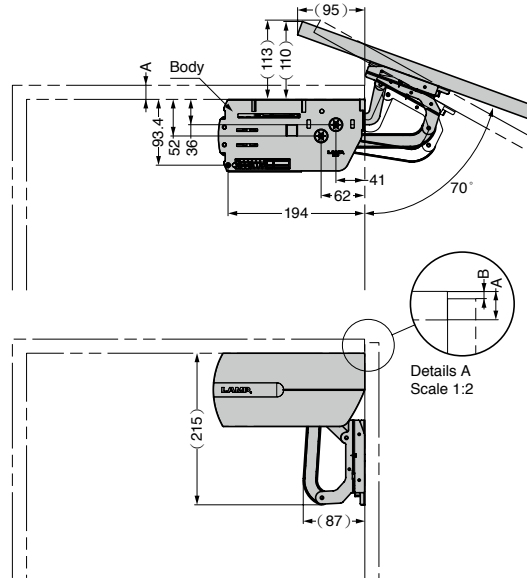
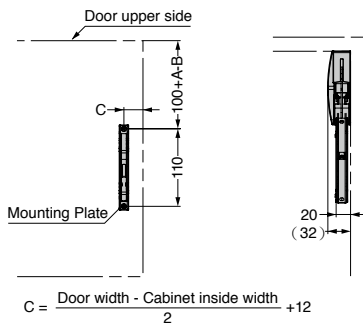


To install the door, simply hook the pin of main unit to the groove of mounting plate and lower the door until it clicks in place.

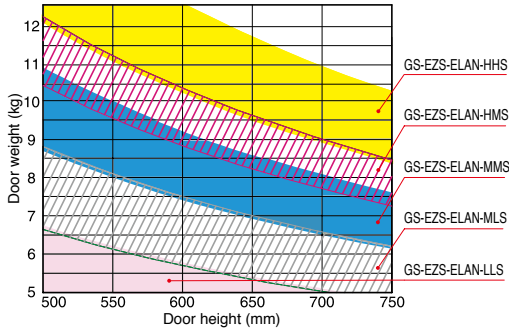


No.	Part Name	Material	Finish
①	Body Cover	ABS	-
②	Body	Steel (SECC)	-
③	Arm	Steel (SPCC)/POM	Nickel
④	Damper	-	-
⑤	Mounting Plate	Steel (SPCC)	Nickel

[Installation]



[Door Size Range]



Refer to the left graph or the following as a guide for model selection.

1. Calculation of lifting power

Lifting power = Door height [mm] × (Door weight [kg] - 1)

Door size

Door width: Max. 1200mm

Door height: 500~750 mm

Door weight: 5~12.5 kg

※ Confirm the movement with actual item if lifting power is at the upper or lower limit of each model.

※ Door weight includes handle.

2. Applicable models

Lifting Power	Model
1900~2860	GS-EZS-ELAN-LLS
2820~3900	GS-EZS-ELAN-MLS
3850~4950	GS-EZS-ELAN-MMS
4700~5600	GS-EZS-ELAN-HMS
5550~6930	GS-EZS-ELAN-HHS

[Set Packing]

Item Name	Material	Finish/Colour	Weight (g)
GS-EZS-ELAN-LLS	Steel/ABS	Nickel/Light Grey	2245
GS-EZS-ELAN-MLS			2316
GS-EZS-ELAN-MMS			2387
GS-EZS-ELAN-HMS			2431
GS-EZS-ELAN-HHS			2475